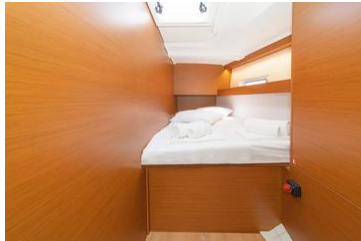


14.4 m 2023 Jeanneau Sun Odyssey 490

**€358,000 Tax: Not Paid**

Dalmatia, Croatia



## Boat Details

Make:	<b>Jeanneau</b>	Class:	<b>Cruiser</b>	Fuel Type:	<b>Diesel</b>
Model:	<b>Sun Odyssey 490</b>	Hull Material:	<b>Fiberglass</b>	Max Speed:	<b>8 kn</b>
Year:	<b>2023</b>	Beam:	<b>4 m 49 cm</b>		
Length:	<b>14 m 43 cm</b>	Boat Location:	<b>Dalmatia, Croatia</b>		
Price:	<b>€358,000</b>	Guest Cabins:	<b>6</b>		
Condition:	<b>Used</b>	Guest Heads:	<b>4</b>		

**Ivan Novak | Marine One Boats**

K.A.Stepinca 88, Trogir, Croatia

Tel: **+385 99 769 0601**

marineone.boats@gmail.com

<https://www.yachtbrokerage.eu/>



## Description

-Boat Jeanneau SO 490 (code 800) is available for sale, takeover immediately

### **-SOLAR PANELS/BOW THRUSTER**

**-6-cabin** sailing yacht **Jeanneau Sun Odyssey 490** was built in 2023 and it is docked in Croatia.

-Boat can accommodate up to 12 people in 1 single cabin, 4 double cabins, 1 double cabin with a bunk bed and a saloon with 1 extra bed.

-Sailing yacht offers **4 toilets with a shower**.

-Boat equipment features **classic mainsail, solar panels, bimini and bow thruster**. It also boasts **audio system, outside speakers and inside speakers**. The fully-equipped galley includes **an oven, cooker, sink and kitchen utensils**.

-If you would like more information for this boat, please contact us by email, Whatsapp message or a call. The price shown is with our commission included. Description and pricing is subject to change without prior notice.

-The Company offers the details of this vessel in good faith but cannot guarantee or warrant the accuracy of this information nor warrant the condition of the vessel. A buyer should instruct his agents, or his surveyors, to investigate such details as the buyer desires validated. This vessel is offered subject to prior sale, price change, or withdrawal without notice.

## Information & Features

### **Yanmar 4JH80 (Engine 1)**

Engine Type:	<b>Inboard</b>	Power:	<b>58.8 kW</b>
Fuel Type:	<b>Diesel</b>		
Engine Hours:	<b>400</b>		

### **Dimensions**

LOA:	<b>14 m 43 cm</b>
Beam:	<b>4 m 49 cm</b>

### **Weights**

Dry Weight:	<b>11,290 kg</b>
-------------	------------------

### **Speed**

Cruising Speed:	<b>6 kn</b>
Max Speed:	<b>8 kn</b>

### **Tanks**

Fuel:	<b>240 l</b>
Fresh Water:	<b>640 l</b>

### **Accommodations**

Guest Cabins:	<b>6</b>
Guest Heads:	<b>4</b>

### **Other**

Hull Shape:	<b>Monohull</b>
-------------	-----------------

## **Covers**

- Bimini Top
- Lazy Bag
- Spray Hood

## **Electrical Equipment**

- Shore Power Inlet: 220V

## **Electronics**

- Autopilot
- CD Player
- Cockpit Speakers
- Compass
- Depthsounder
- GPS
- Log-Speedometer
- Plotter
- Radio
- VHF
- Wind Speed and Direction

## **Inside Equipment**

- Battery Charger
- Bow Thruster
- Electric Bilge Pump
- Electric Head
- Heating
- Manual Bilge Pump
- Oven
- Refrigerator

## **Outside Equipment/Extras**

- Cockpit Cushions
- Cockpit Shower
- Cockpit Table
- Outboard Engine Brackets
- Solar Panel
- Swimming Ladder
- Teak Cockpit

## **Rigging**

- Steering Wheel: 2
- Tiller: Emergency Tiller

## **Sails**

- Battened Mainsail
- Genoa

## Manufacturer Provided Description

To be the flagship of the walk around series, the Sun Odyssey 490 had to set the bar for innovation, performance, and comfort. Phillippe Briand and Jean-Marc Piaton took on the challenge and designed a boat that not only sets the standard for the Sun Odyssey range, but redefines what is capable in the 50 foot cruising market. In this design, Lombard added even more hull volume to the Sun Odyssey lines, delivering greater sailing performance, more interior space for guests comfort, and more lounge areas on topside.

As with every Sun Odyssey, the cockpit ergonomics are second to none. Every sheet is cleverly led to the helm station, where the boat can be easily single or double handed. The massive cockpit lounge is framed by the iconic walk around decks, which make movement around the boat easier than ever before. However, the game changer comes when the convertible coamings, the unfolding seat backs, are set up as beds. The entire aft eight feet of the boat transform into a cushioned sun bathing deck.

The open concept interior is bathed in light, as the main salon features many rows of windows and hatches. The central U-shaped galley is optimally placed for comfort while under way, as well as serving meals in the salon. In the 490, the nav station is particularly emphasized, as there is an aft facing bench added to it, elevating this feature into a coffee nook or home office.

However, it's the forward stateroom where this boat really sets itself apart. The square queen bed has plenty of space to walk around on all sides, and the large central armoire is perfect for mounting a television for viewing in bed. The gorgeous shower stall is placed on centerline, allowing for 6'6" headroom; a luxury usually only found on much larger boats.

## Disclaimer

The Company offers the details of this vessel in good faith but cannot guarantee or warrant the accuracy of this information nor warrant the condition of the vessel. A buyer should instruct his agents, or his surveyors, to investigate such details as the buyer desires validated. This vessel is offered subject to prior sale, price change, or withdrawal without notice.

